

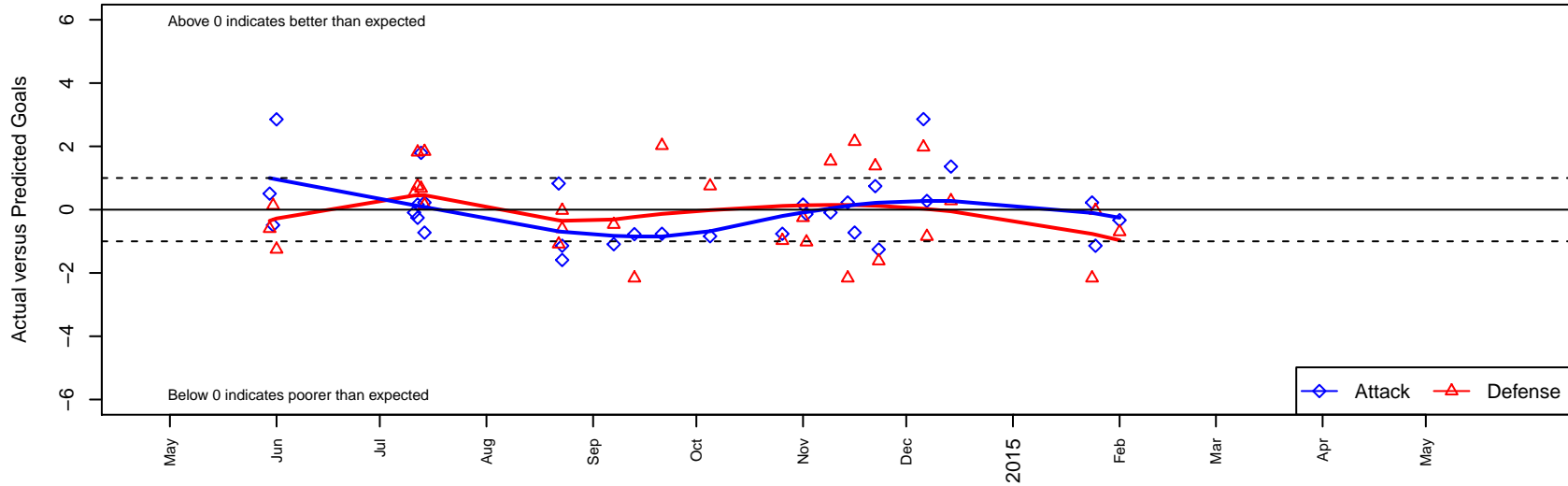
# Whatcom Rangers Gold B97

Whatcom FC Rangers  
 Bellingham, WA  
 B97 total strength=1747  
 attack=28.55 defense=24.78  
 fall league = RCL B97 Div 1, RCL B97 7V2  
 notes= Quilici 2014

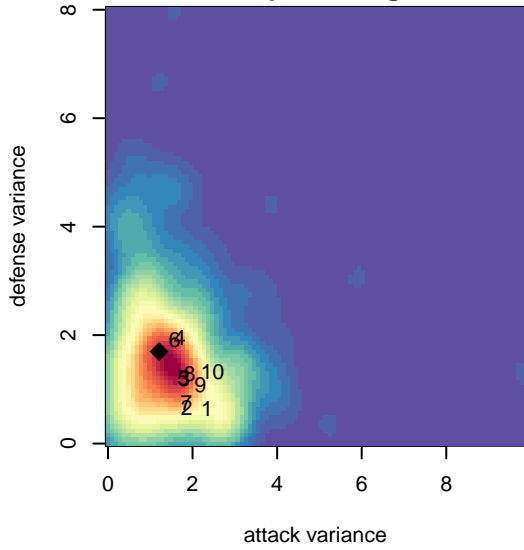
alt names used:  
 WHATCOM RANGERS WFC RANGERS BU97  
 101 WFC Rangers BU97 / Quilici  
 Whatcom FC Ra – BU97 Gold  
 Whatcom FC Ra – BU97 Gold  
 WHATCOM RANGERSWFC RANGERS BU16  
 Whatcom FC Ra – BU97 Gold

Venues played:  
 2014 Showcase of Champions U16 Blue  
 2014 Nike Crossfire Challenge Gold U17  
 2014 Puma Pacific Coast Challenge Premier U  
 2014 RCL B97 Div 1  
 2014 RCL B97 7V2  
 2014 WYS Championship B97

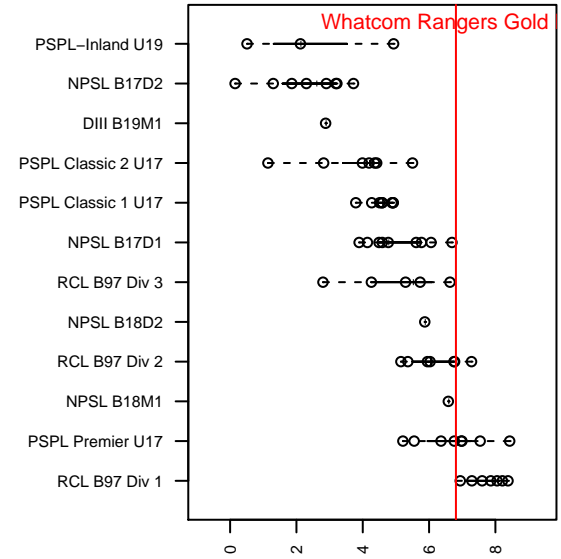
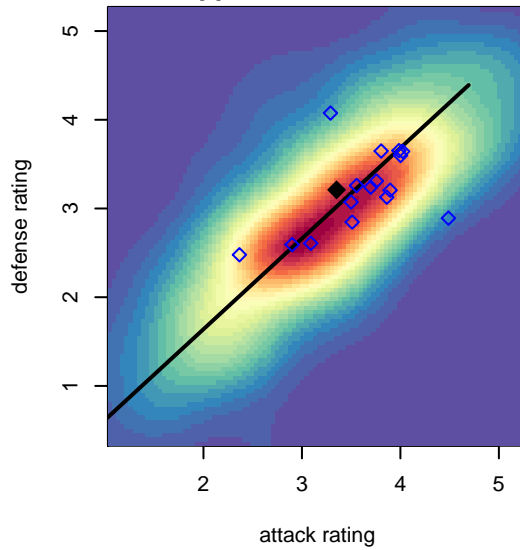
**Whatcom Rangers Gold B97**  
 Dots are actual minus expected GF (blue circles) and GA (red triangles).  
 Blue line is smoothed change in attack strength. Red is smoothed change in defense strength.



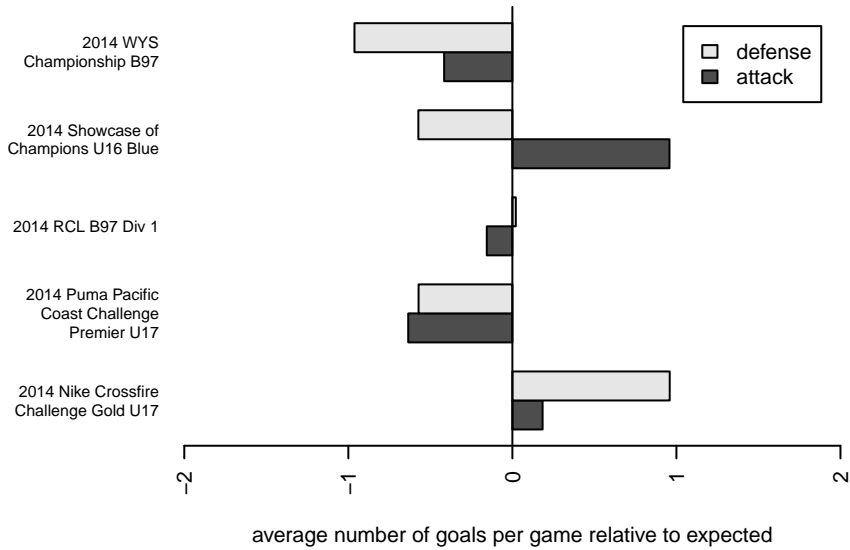
**attack and defense variance (black dot)  
relative to other teams  
and top 10 in region**



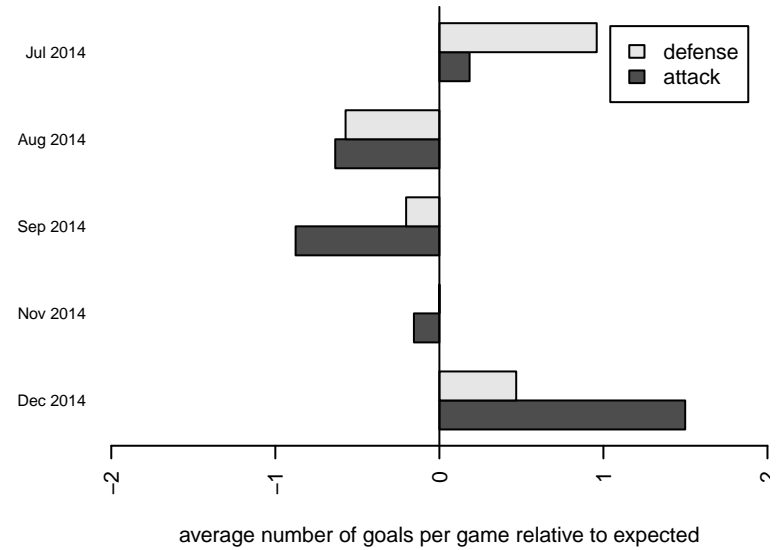
**attack and defense rating  
relative to others at age  
and all opponents in last 13 months**



**Performance relative to 13 month average**



**Performance relative to 13 month average**



| date       | home                                |   | away                            |   | venue                                    | pred.home | pred.away |
|------------|-------------------------------------|---|---------------------------------|---|--|-----------|-----------|
| 2015-02-01 | Whatcom Rangers Gold B97            | 1 | Washington Timbers Red B97      | 2 | 2014 WYS Championship B97                | 1.33      | 1.30      |
| 2015-01-25 | 3 Rivers Black B97                  | 2 | Whatcom Rangers Gold B97        | 0 | 2014 WYS Championship B97                | 1.98      | 1.14      |
| 2015-01-24 | WPFC Black B97                      | 4 | Whatcom Rangers Gold B97        | 1 | 2014 WYS Championship B97                | 1.84      | 0.77      |
| 2014-12-14 | Whatcom Rangers Gold B97            | 3 | FWFC Blue B97                   | 1 | 2014 RCL B97 7V2                         | 1.64      | 1.28      |
| 2014-12-07 | Crossfire Premier A B97             | 3 | Whatcom Rangers Gold B97        | 1 | 2014 RCL B97 Div 1                       | 2.15      | 0.73      |
| 2014-12-06 | Whatcom Rangers Gold B97            | 4 | 3 Rivers Black B97              | 0 | 2014 RCL B97 Div 1                       | 1.14      | 1.98      |
| 2014-11-23 | Seattle United Tango B97            | 3 | Whatcom Rangers Gold B97        | 0 | 2014 RCL B97 Div 1                       | 1.38      | 1.26      |
| 2014-11-22 | Whatcom Rangers Gold B97            | 2 | Seattle United Tango B97        | 0 | 2014 RCL B97 Div 1                       | 1.26      | 1.38      |
| 2014-11-16 | Whatcom Rangers Gold B97            | 0 | Crossfire Premier A B97         | 0 | 2014 RCL B97 Div 1                       | 0.73      | 2.15      |
| 2014-11-14 | WPFC Black B97                      | 4 | Whatcom Rangers Gold B97        | 1 | 2014 RCL B97 Div 1                       | 1.84      | 0.77      |
| 2014-11-09 | Whatcom Rangers Gold B97            | 1 | Snohomish United Black B97      | 0 | 2014 RCL B97 Div 1                       | 1.09      | 1.53      |
| 2014-11-02 | 3 Rivers Black B97                  | 3 | Whatcom Rangers Gold B97        | 1 | 2014 RCL B97 Div 1                       | 1.98      | 1.14      |
| 2014-11-01 | Eastside FC Red B97                 | 2 | Whatcom Rangers Gold B97        | 1 | 2014 RCL B97 Div 1                       | 1.75      | 0.84      |
| 2014-10-26 | Whatcom Rangers Gold B97            | 0 | Seattle United Copa B97         | 3 | 2014 RCL B97 Div 1                       | 0.76      | 2.02      |
| 2014-10-05 | Whatcom Rangers Gold B97            | 0 | Eastside FC Red B97             | 1 | 2014 RCL B97 Div 1                       | 0.84      | 1.75      |
| 2014-09-21 | Seattle United Copa B97             | 0 | Whatcom Rangers Gold B97        | 0 | 2014 RCL B97 Div 1                       | 2.02      | 0.76      |
| 2014-09-13 | Whatcom Rangers Gold B97            | 0 | WPFC Black B97                  | 4 | 2014 RCL B97 Div 1                       | 0.77      | 1.84      |
| 2014-09-07 | Snohomish United Black B97          | 2 | Whatcom Rangers Gold B97        | 0 | 2014 RCL B97 Div 1                       | 1.53      | 1.09      |
| 2014-08-23 | Coquitlam Metro Ford Spartans 1998B | 4 | Whatcom Rangers Gold B97        | 0 | 2014 Puma Pacific Coast Challenge Premie | 3.40      | 1.59      |
| 2014-08-23 | Whatcom Rangers Gold B97            | 0 | 3 Rivers Black B97              | 2 | 2014 Puma Pacific Coast Challenge Premie | 1.14      | 1.98      |
| 2014-08-22 | Whatcom Rangers Gold B97            | 3 | Tynecastle FC B97               | 2 | 2014 Puma Pacific Coast Challenge Premie | 2.17      | 0.91      |
| 2014-07-14 | WPFC Black B97                      | 0 | Whatcom Rangers Gold B97        | 1 | 2014 Nike Crossfire Challenge Gold U17   | 1.84      | 0.77      |
| 2014-07-14 | Crossfire Premier A B97             | 2 | Whatcom Rangers Gold B97        | 0 | 2014 Nike Crossfire Challenge Gold U17   | 2.15      | 0.73      |
| 2014-07-13 | Whatcom Rangers Gold B97            | 3 | PacNW Maroon B97                | 1 | 2014 Nike Crossfire Challenge Gold U17   | 1.20      | 1.67      |
| 2014-07-12 | Eastside FC Red B97                 | 1 | Whatcom Rangers Gold B97        | 1 | 2014 Nike Crossfire Challenge Gold U17   | 1.75      | 0.84      |
| 2014-07-12 | Foothill Storm SC B97               | 0 | Whatcom Rangers Gold B97        | 1 | 2014 Nike Crossfire Challenge Gold U17   | 1.82      | 1.26      |
| 2014-07-11 | Snohomish United Black B97          | 1 | Whatcom Rangers Gold B97        | 1 | 2014 Nike Crossfire Challenge Gold U17   | 1.53      | 1.09      |
| 2014-06-01 | Whatcom Rangers Gold B97            | 5 | Crossfire Oregon Black West B97 | 2 | 2014 Showcase of Champions U16 Blue      | 2.15      | 0.75      |

| <b>date</b> | <b>home</b>           |   | <b>away</b>              |   | <b>venue</b>                        | <b>pred.home</b> | <b>pred.away</b> |
|-------------|-----------------------|---|--------------------------|---|-------------------------------------|------------------|------------------|
| 2014-05-31  | Richmond United 1998B | 1 | Whatcom Rangers Gold B97 | 0 | 2014 Showcase of Champions U16 Blue | 1.13             | 0.49             |
| 2014-05-30  | PCU Red B97           | 1 | Whatcom Rangers Gold B97 | 3 | 2014 Showcase of Champions U16 Blue | 0.40             | 2.49             |